

MOBILE PALLET WRAPPER



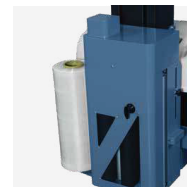
◀ NEW TOP COVER



◀ EASY THREAD



◀ AUTOMATION FILM CUTTING



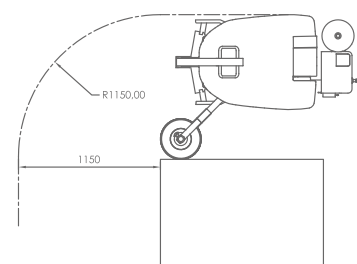
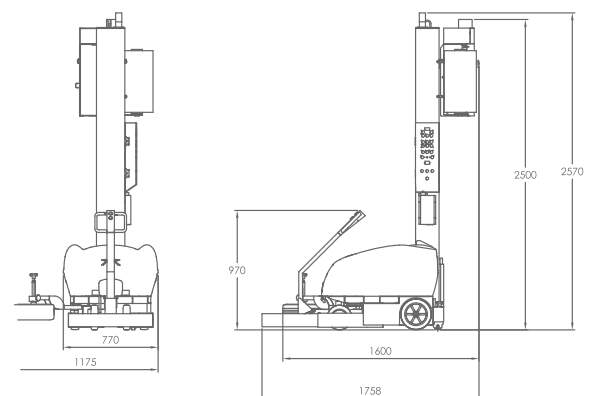
◀ CARRIAGE

SPECIFICATIONS

- Batteries: Two 12v 100ah Non-Maintenance Type Batteries
- Battery Charger: 110v - 240v
- Power Consumption: 0.7kw
- Cart Rotating Speed: 20 - 90m/Min
- Carriage Speed: 1-5m/Min
- Max. Loading Weight: Floor Capacity
- Min. Pallet Size: 600mm (L) × 600mm (W)
- Max. Wrapping Height: 2200mm
- Numbers Of Pallets Per Battery Charge: Up To 300 Pallets

OPTION

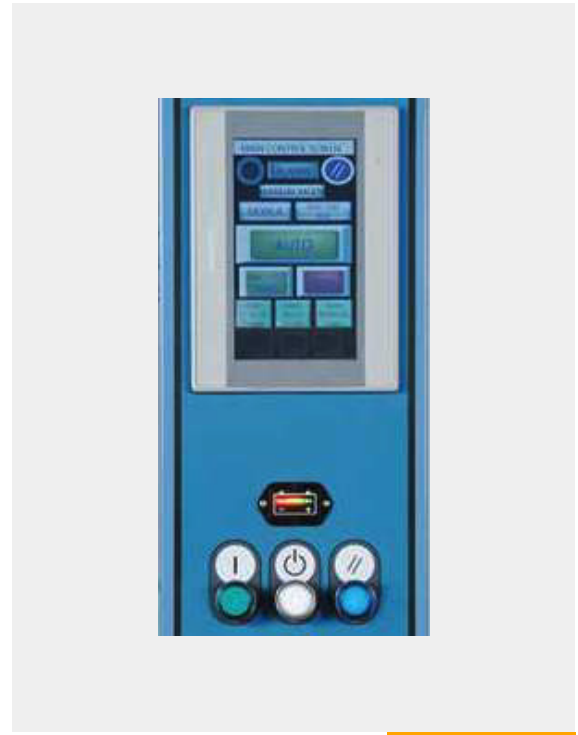
- Wrapping Height: 2400mm/2800mm
- Mechanical Roping



MVS RW 30



MVS RW 30 PLUS



FEATURES

- 230% & 300% Power Pre-Stretch (1m -> 4m)
- Available 200% & 250% Power Pre-Stretch
- Easy Film Treading Design
- Automatic Film Cutting
- Adjustable Top And Bottom Wrap Counts
- Adjustable Wrapping Tension/Cart Rotation Speed/ Carriage Speed
- Password Protected Control Panel
- Height Detection By Photo Sensor
- One-Way Idle Roller Design To Allow Film Tail To Stay Outside Of Carriage When Film Breaks
- Carriage Anti-Falling Device

FEATURES

- 230% & 300% Power Pre-Stretch (1m -> 4m)
- Available 200% & 250% Power Pre-Stretch
- Easy Film Treading Design
- Automatic Film Cutting
- Adjustable Top And Bottom Wrap Counts
- Adjustable Wrapping Tension/Cart Rotation Speed/ Carriage Speed
- Password Protected Control Panel
- Color Touch Screen Control Panel
- Height Detection By Photo Sensor
- One-Way Idle Roller Design To Allow Film Tail To Stay Outside Of Carriage When Film Breaks
- Carriage Anti-Falling Device

